

WHAT ELSE SHOULD I KNOW?

Members enjoy fellowship with each other at monthly meetings on the first Saturday of each month. We begin by praying the Rosary in church at 8:20 AM, followed by the celebration of Mass at 8:45. The meeting follows in the Teen Center where refreshments are served. New members are always welcomed.

Other activities include the crowning of the Blessed Mother in the gazebo at our May meeting, a Morning of Reflection during Lent and sponsoring the "Ice Chest of Fun" raffle at the parish fair.



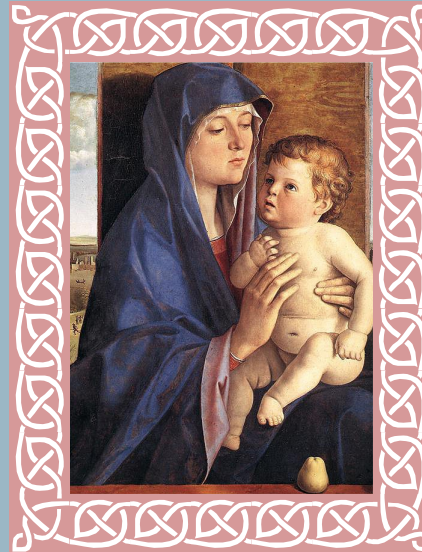
On quiet weekday mornings in St. Benilde Church, silent disciples are at work. They dust, sweep, press and fold, among other important tasks. They are the ladies and men of our Rosary and Altar Society. Throughout the centuries in the life of the Church, the core mission of the Altar Society remains: they provide and care for the bread, wine, vessels, linens, vestments, candles, décor, flowers and anything else needed for the altar of worship. At St. Benilde, the Blessed Mother is the patron on our Altar Society, and the members do what they do to honor her in care of the her Son's house.

~ Fr. Robert T. Cooper, Pastor



1901 Division St.
Metairie, LA 70001
504-834-4980

www.stbenilde.org



ST. BENILDE ROSARY AND ALTAR SOCIETY



CARING FOR THE LORD'S HOUSE

WHAT WE ARE ALL ABOUT

We are a service organization grounded in devotion to the Blessed Virgin Mary and dedicated to the care of the Lord's sacred altars. As Mary lovingly tended to the Holy Family's home in Nazareth, our members also regularly undertake the care and cleaning of the altar, Mass linens, altar linens and the priests' and altar servers' albs.

The Society is also responsible for ordering weekly flower arrangements and for the beautiful liturgical décor enjoyed by all at Christmas, Easter and other holy days. Baptismal bibs are lovingly handmade for all babies baptized at St. Benilde Church.



Who May Join?

The St. Benilde Rosary and Altar Society is open to women and men, young and elderly, who have an ardent desire to serve and honor God by helping to maintain and beautify the Lord's house. All adults are eligible to join, even if you cannot attend the monthly meetings. Because some items we handle are heavy, especially the seasonal décor for Christmas and Easter, men are particularly welcome to join. For further information, please contact the Parish Office: 504-834-4980.

REGISTRATION FORM FOR THE ST. BENILDE ROSARY AND ALTAR SOCIETY

NAME: _____

ADDRESS: _____

TELEPHONE: Home Cell _____

May we send you a text? _____

EMAIL ADDRESS: _____

ANNUAL DUES \$10.00

Check below any committees you serve on or wish to serve on:

____ Flowers (Includes tending altar flowers by watering or removing old flowers as needed and preparing for delivery of new arrangements, decorating church for holidays and feast days when appropriate)

____ Cleaning (Includes dusting of statues, altar and surrounding area, cleaning holy water fonts, cleaning glass doors and cry-room windows)

____ Small Linens (Includes proper washing and ironing of altar cloths)

____ Large Linens (Includes cleaning of altar boy and priests garments)

____ Hospitality (Includes purchasing and setting up of refreshments for monthly meeting and other events)

____ Telephone (Includes contacting members when necessary)

____ Rosary (Includes securing members to lead monthly rosary)

____ Holy Vessels (Includes proper cleaning of these items)

____ Membership (Includes maintenance of current member roster)

